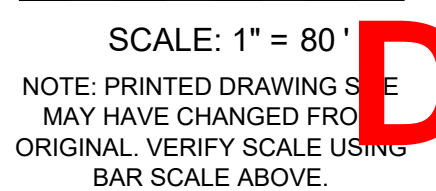


- | PLANT SCHEDULE                |       |   |                  |         |          |        |                                 |
|-------------------------------|-------|---|------------------|---------|----------|--------|---------------------------------|
| CODE                          | QTY   | BOTANICAL / COMMON NAME                       | HEIGHT           | SPREAD  | DBH/CAL  | NATIVE | REMARKS                         |
| <b>TREES</b>                  |       |   |                  |         |          |        |                                 |
| BS                            | 17    | BURSERA SIMARUBA                              | 12' HT           | 5' SPR  | 3" CAL   | N**    |                                 |
| CI                            | 9     | GUMBO LIMBO<br>CALOPHYLLUM INOPHYLLUM         | 12' HT           | 5' SPR  | 2.5" CAL | **     |                                 |
| CE                            | 18    | BEAUTY LEAF<br>CONOCARPUS ERECTUS             | 12' HT           | 5' SPR  | 2.5" CAL | N**    |                                 |
| DR                            | 2     | GREEN BUTTONWOOD<br>DELOXIA REGIA             | 16' HT           | 8' SPR  | 4" CAL   | **     |                                 |
| ED                            | 60    | ROYAL POINCIANA<br>ELAEOCARPUS DECIPENS       | 12' HT           | 5' SPR  | 2.5" CAL | **     | TREE FORM, NO SHAPING           |
| LL                            | 10    | JAPANESE BLUEBERRY<br>LYSILOMA LATISLIQUUM    | 12' HT           | 5' SPR  | 2.5" CAL | N**    |                                 |
| MP                            | 6     | WILD TAMARIND<br>MYRCIANTHES FRAGRANS         | 10' HT           | 8' SPR  | 2" CAL   | N      | MULTI-TRUNK: 3-5 STEMS          |
| PP                            | 4     | SIMPSON'S STOPPER<br>PELTOPHORUM PTEROCARPUM  | 12' HT           | 5' SPR  | 2.5" CAL | **     |                                 |
| PE2                           | 28    | YELLOW POINCIANA<br>PINUS ELLIOTTII           | 10' HT           | 5' SPR  | 2.5" CAL | N**    |                                 |
| PE3                           | 22    | SLASH PINE<br>PINUS ELLIOTTII                 | 8' HT            | 3' SPR  | 2" CAL   | N**    |                                 |
| PE                            | 12    | SLASH PINE<br>PINUS ELLIOTTII                 | 16' HT           | 6' SPR  | 4" CAL   | N**    |                                 |
| QV                            | 52    | SLASH PINE<br>QUERCUS VIRGINIANA              | 18' HT           | 8' SPR  | 5" CAL   | N**    |                                 |
| SL                            | 16    | LIVE OAK<br>STEMMADENIA LITORALIS             | 8' HT            | 4' SPR  | 1.5" CAL |        |                                 |
| TH                            | 10    | MILKY WAY TREE<br>TABEGUIA HETEROPHYLLA       | 12' HT           | 5' SPR  | 2.5" CAL | **     |                                 |
| TD2                           | 32    | PINK TABEGUIA<br>TAXODIUM DISTICHUM           | 10' HT           | 4' SPR  | 1.5" CAL | N**    | FULL CANOPY, STAGGERED HTS      |
| TD                            | 21    | BALD CYPRESS<br>TAXODIUM DISTICHUM            | 18' HT           | 8' SPR  | 5" CAL   | N**    | FULL CANOPY                     |
| TG                            | 51    | BALD CYPRESS<br>TIBOUCHINA GRANULOSA          | 8' HT            | 7' SPR  | 2" CAL   |        |                                 |
|                               |       | PURPLE GLORY TREE                             |                  |         |          |        |                                 |
| <b>PALMS</b>                  |       |   |                  |         |          |        |                                 |
| LC                            | 25    | LIVISTONA CHINENSIS                           | 14', 18', 22' CT | 10' SPR | 10" CAL  | **     | STAGGERED; SEE PLAN             |
| SP                            | 50    | CHINESE FAN PALM<br>SABAL PALMETTO            | 12', 18', 24' CT | 12' SPR | 10" CAL  | N**    | STAGGERED HTS, SEE PLAN FOR HTS |
| TR3                           | 20    | SABAL PALM<br>THRINAX RADIATA                 | 8' CT            | 10' SPR | 4" CAL   | N**    |                                 |
| VM                            | 56    | FLORIDA THATCH PALM<br>VEITCHIA MONTGOMERYANA | 12'-16' CT       | 14' SPR | 6" CAL   | *      |                                 |
|                               |       | MONTGOMERY PALM                               |                  |         |          |        |                                 |
| CODE                          | QTY   | BOTANICAL / COMMON NAME                       | HEIGHT           | SPREAD  | SPACING  | NATIVE | REMARKS                         |
| <b>SHRUBS</b>                 |       |   |                  |         |          |        |                                 |
| CHR                           | 1,770 | CHRYSOBALANUS ICACO                           | 24" HT           | 24" SPR | 24" O.C. | N**    |                                 |
|                               |       | COCO PLUM                                     |                  |         |          |        |                                 |
| <b>CONCEPTUAL SHRUB AREAS</b> |       |   |                  |         |          |        |                                 |
| ERN                           |       | ERNODEA LITTORALIS                            | 10" HT           | 10" SPR | 18" O.C. | N**    |                                 |
|                               |       | GOLDEN CREEPER                                |                  |         |          |        |                                 |
| HGI                           |       | FICUS 'GREEN ISLAND'                          | 12" HT           | 12" SPR | 12" O.C. | **     |                                 |
|                               |       | GREEN ISLAND FICUS                            |                  |         |          |        |                                 |
| FDI                           |       | HAMELIA PATENS 'COMPATA'                      | 24" HT           | 24" SPR | 24" O.C. | **     |                                 |
|                               |       | DWARF FIREBUSH                                |                  |         |          |        |                                 |
| JAS                           |       | JASMINUM VOLUBILE                             | 12" HT           | 16" SPR | 24" O.C. | **     |                                 |
|                               |       | WAX JASMINE                                   |                  |         |          |        |                                 |
| LIR                           |       | LIROPE MUSCARI 'BIG BLUE'                     | 10" HT           | 10" SPR | 12" OC   | **     |                                 |
|                               |       | BIG BLUE LILYTURF                             |                  |         |          |        |                                 |
| MUH                           |       | MUHLENBERGIA CAPILLARIS                       | 24" HT           | 24" SPR | 24" O.C. | N**    |                                 |
|                               |       | CULF MUHLY GRASS                              |                  |         |          |        |                                 |
| NEP                           |       | NEPHROLEPIS EXALTATA                          | 10" HT           | 14" SPR | 24" O.C. | N**    |                                 |
|                               |       | BOSTON FERN                                   |                  |         |          |        |                                 |
| PEN                           |       | PENNISETUM SETACEUM                           | 24" HT           | 30" SPR | 24" O.C. | **     |                                 |
|                               |       | WHITE FOUNTAIN GRASS                          |                  |         |          |        |                                 |
| PLU                           |       | PLUMBAGO AURICULATA                           | 16" HT           | 20" SPR | 24" O.C. | *      |                                 |
|                               |       | 'IMPERIAL BLUE'                               |                  |         |          |        |                                 |
|                               |       | PLUMBAGO                                      |                  |         |          |        |                                 |
| TRD                           |       | TRIPSACUM FLORIDANUM                          | 24" HT           | 24" SPR | 30" OC   | N**    |                                 |
|                               |       | DWARF FAKAHATCHEE                             |                  |         |          |        |                                 |
| ZAM                           |       | ZAMIA PUMILA                                  | 15" HT           | 18" SPR | 24" O.C. | N**    |                                 |
|                               |       | COONTIE                                       |                  |         |          |        |                                 |

PALMS							
LC	25	LIVISTONA CHINENSIS CHINESE FAN PALM	14', 18', 22' CT	10' SPR	10" CAL	**	STAGGERED; SEE PLAN
SP	50	SABAL PALMETTO SABAL PALM	12', 18', 24' CT	12' SPR	10" CAL	N**	STAGGERED HTS, SEE PLAN FOR HTS
TR3	20	THRINAX RADIATA FLORIDA THATCH PALM	8' CT	10' SPR	4" CAL	N**	
VM	56	VEITCHIA MONTGOMERYANA MONTGOMERY PALM	12'-16" CT	14' SPR	6" CAL	*	

CODE	QTY	BOTANICAL / COMMON NAME	HEIGHT	SPREAD	SPACING	NATIVE	REMARKS
<b>SHRUBS</b>							
CHR	1,770	CHRYSOBALANUS ICACO COCO PLUM	24" HT	24" SPR	24" O.C.	N**	
<b>CONCEPTUAL SHRUB AREAS</b>							
ERN		ERNODEA LITTORALIS GOLDEN CREEPER	10" HT	10" SPR	18" O.C.	N**	
FGI		FICUS 'GREEN ISLAND' GREEN ISLAND FICUS	12" HT	12" SPR	12" O.C.	**	
HPS		HAMELIA PATENS 'COMPATA' DWARF FIREBUSH	24" HT	24" SPR	24" O.C.	**	
JAD		JASMINUM VOLUBILE WAX JASMINE	12" HT	16" SPR	24" O.C.	**	
LIR		LIRIOPE MUSCARI 'BIG BLUE' BIG BLUE LILYTURF	10" HT	10" SPR	12" OC	**	
MUH		MUHLENBERGIA CAPILLARIS GULF MUHLY GRASS	24" HT	24" SPR	24" O.C.	N**	
NEP		NEPHROLEPIS EXALTATA BOSTON FERN	10" HT	14" SPR	24" O.C.	N**	
PEN		PENNISETUM SETACEUM WHITE FOUNTAIN GRASS	10" HT	30" SPR	24" O.C.	**	
PLU		PLUMBAGO AURICULATA IMPERIAL BLUE PLUMBAGO	16" HT	20" SPR	24" O.C.	*	
TRD		TRIPSACUM FLORIDANUM DWARF FAKAHATCHEE	24" HT	24" SPR	30" OC	N**	
ZAM		ZAMIA PUMILA COONTIE	15" HT	18" SPR	24" O.C.	N**	



NOTE: PRINTED DRAWING SIZE  
MAY HAVE CHANGED FROM  
ORIGINAL. VERIFY SCALE USING  
BAR SCALE ABOVE.

[illegible]

**ISSUE DATE:** 08/26/2025

DESIGNED BY: KU, SL

DRAWN BY: KU, GM

**CHECKED BY:** KU, KS

**BID-CONTRACT:**

**PAUL H. WEINBERG, PLA  
FLORIDA REG. NO. LA6666804  
(FOR THE FIRM)**

**CLIENT**

**FIRST  
INDUSTRIAL**

PROJECT

**FIRST 95 DISTRIBUTION  
CENTER- PHASE II  
1000-1041 NW 12th Ter.  
Pompano Beach, FL**

**SHEET TITLE**

## OVERALL PLANTING PLAN

**IP-100**

**PROJECT NUMBER** 10607.14

**PZ25-12000030**

10/01/2025

Drawing name: Q:\10607.14 - First Industrial\Landscape Architecture\CAD\10607.14 - LP-1XX.dwg

**STATUS: PRELIMINARY**